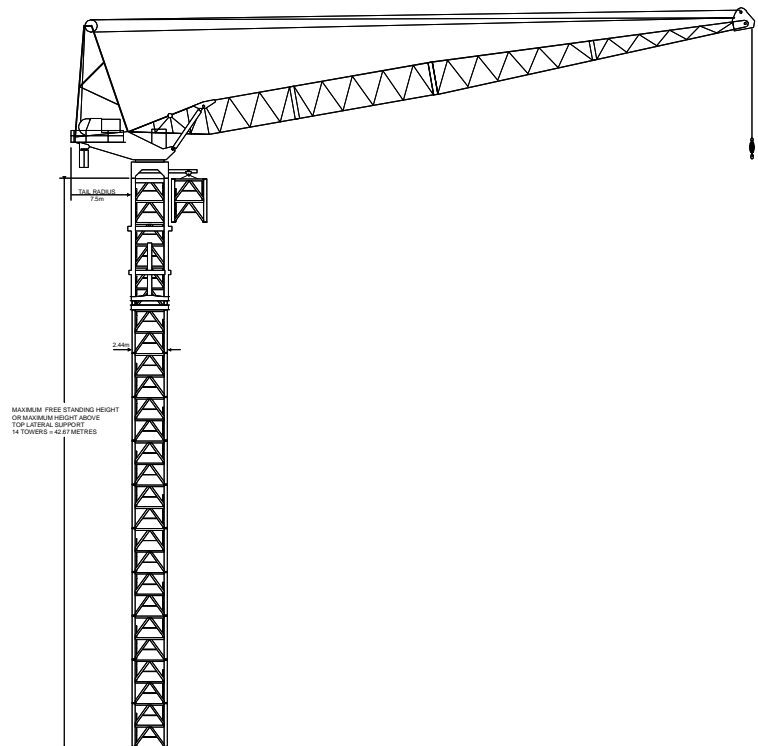




FAVCO 350 HT TOWER CRANE

Radius	Main Boom Length		
	32.9	42.0	48.8
8.0	14000	14000	
8.5	13000	13000	
9.0	12000	12000	
10.0	11000	11000	
11.0	10000	10000	
12.0	9000	9000	
13.0	8000	8000	
16.0	7000	7000	
17.0			
18.0	7000	7000	7000
20.0			
23.0	6000	6000	
24.0			4500
27.0	5000	5000	
30.0	4000		3250
32.0		4000	
36.0		3000	2250
40.0		2500	
41.0			1750
46.0			1340



Notes on Double Fall

Double fall capacities are shown in shaded area.
 Double fall capability available on 32.9m and 42.0m booms only.
 Double fall radius is not to exceed 16.0 metres on 32.9m boom
 Double fall radius is not to exceed 16.0 metres on 42.0m boom

48.8m boom available in single fall only.

Notes on Single Fall

Maximum capacity for radii less than 16.0 metres is not to exceed 7000 kg.